



BONAVA

**VDC and Working Environment
"SMC Rules"**

Martin Klüver, VDC- and Project Manager

2018-09-20

Example of a single row headline

- Test project taken out of context
- Too late in the process to test it as part of our design system
- Got 5 predefined set of rules for testing



Kystengen

KØGE KYST

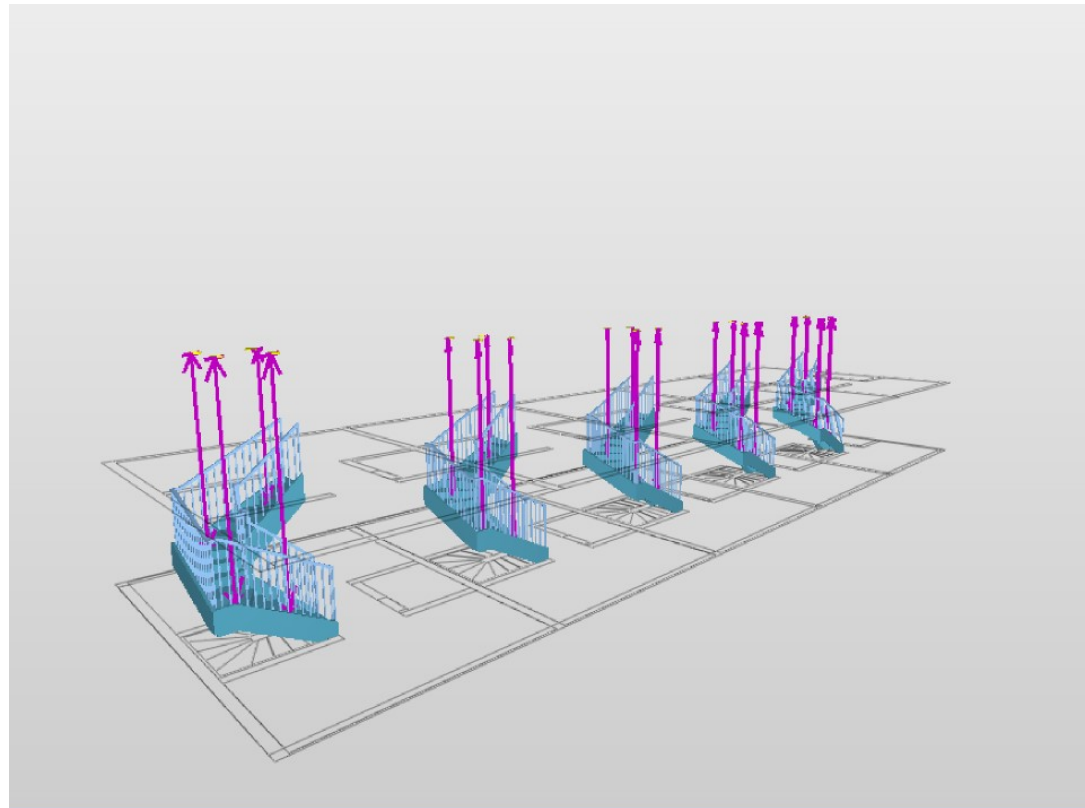
TIL SALG



Soveværelser	1 - 3
Størrelse	67 - 138 m ²
Pris	2 095 000 - 5 095 000 kr.
Antal hjem	62
Boligtype	Lejlighed

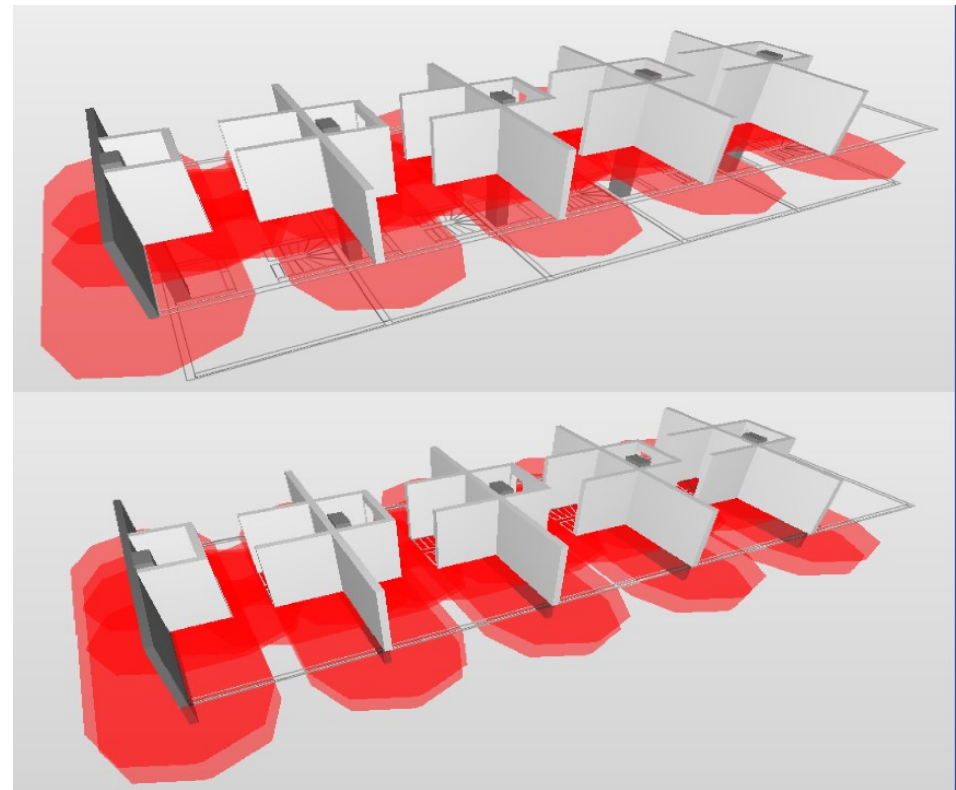
Components of stairs

- Can't come to elements of stairs, without blocking the stairs (which are often escape route)
- Checks if there is installation elements over the stairs
- Find stairs and elements from IFC category

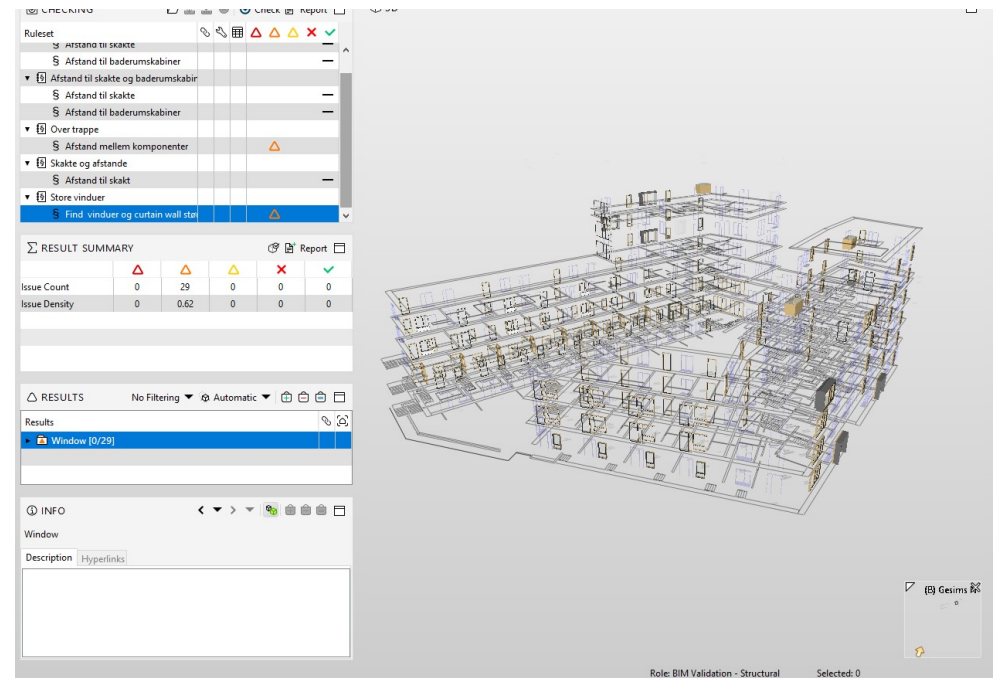
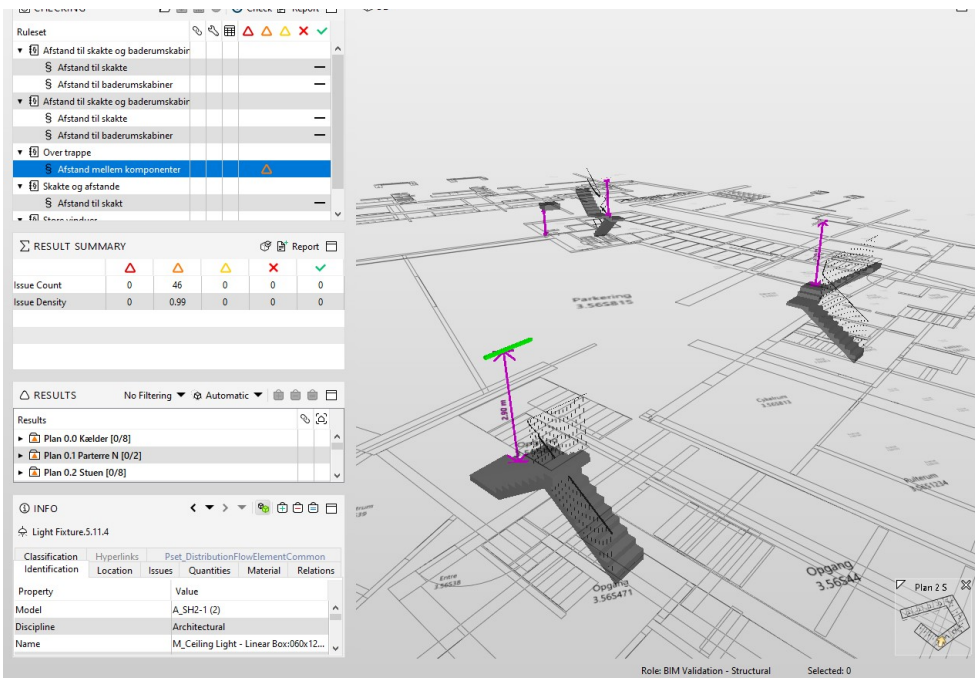


Components of stairs

- Necessary Stiffening collide with constructions
- Has had an accident with moved stiffeners due to a bathing cabin
- We do not draw stiffenings so how do we come further than a checklist?



square meters



- How do we get down to typelevel and maintain user-friendliness
- Works best at main project level

- Indicates windows over a 1 square meters
- Getting too muddy – were are the reel issues

Feedback

1. It works and force us or our advisors to take actions
2. We need more specific rulesets
3. Could be a little harder to define rules as it is typically more process oriented than "normal" collisions.
4. Must be part of our "normal" management and quality assurance system
5. How do we associate it with the rest of the value chain
6. What form should it be received during the execution phase?